

Safe return to school plan

School is open for learning.

The Department of Education is following current public health advice to reduce the transmission of COVID-19 in our schools and our communities.

We are committed to delivering quality teaching to children in Western Australia.

Learning



Face to face teaching

Staff



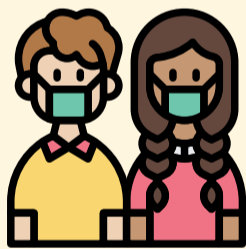
Required to be triple
dose vaccinated

Visitors



Show proof of vaccination
when required

COVID-19 safe schools



Masks supplies for
staff and students



Pool of vaccinated
school staff available



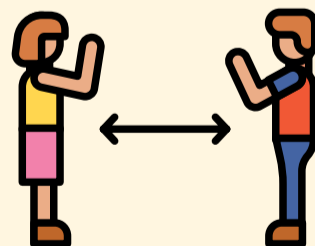
Adequate ventilation
for all classrooms



Air purifiers supplied
where required



Stay home
when sick



Avoid unnecessary
physical contact



Additional
cleaning



Hand sanitiser
supplies

If you require further information or assistance, please speak to your principal or a staff member at your school. You can also contact your regional office. For COVID-19 queries, please contact coronavirussupport@education.wa.edu.au or call 1800 882 345.

[education.wa.edu.au](https://www.education.wa.edu.au)

*to comply with public health directions